



SOS: МУСОРНЫЙ ОСТРОВ В ТИХОМ ОКЕАНЕ

ЧИТАЙТЕ НА [BLOG.CITY.TRAVEL](https://blog.city.travel)





The Trash Vortex

The journey of trash

Plastic trash and other flotsam that is either directly thrown or washed by rivers into the North Pacific, is swept up by the currents of a gigantic swirling vortex called the North Pacific Gyre. In the centre, the calm, just northeast of Hawai'i the result is a trash carpet that scientists calculate has now reached the size of Texas.

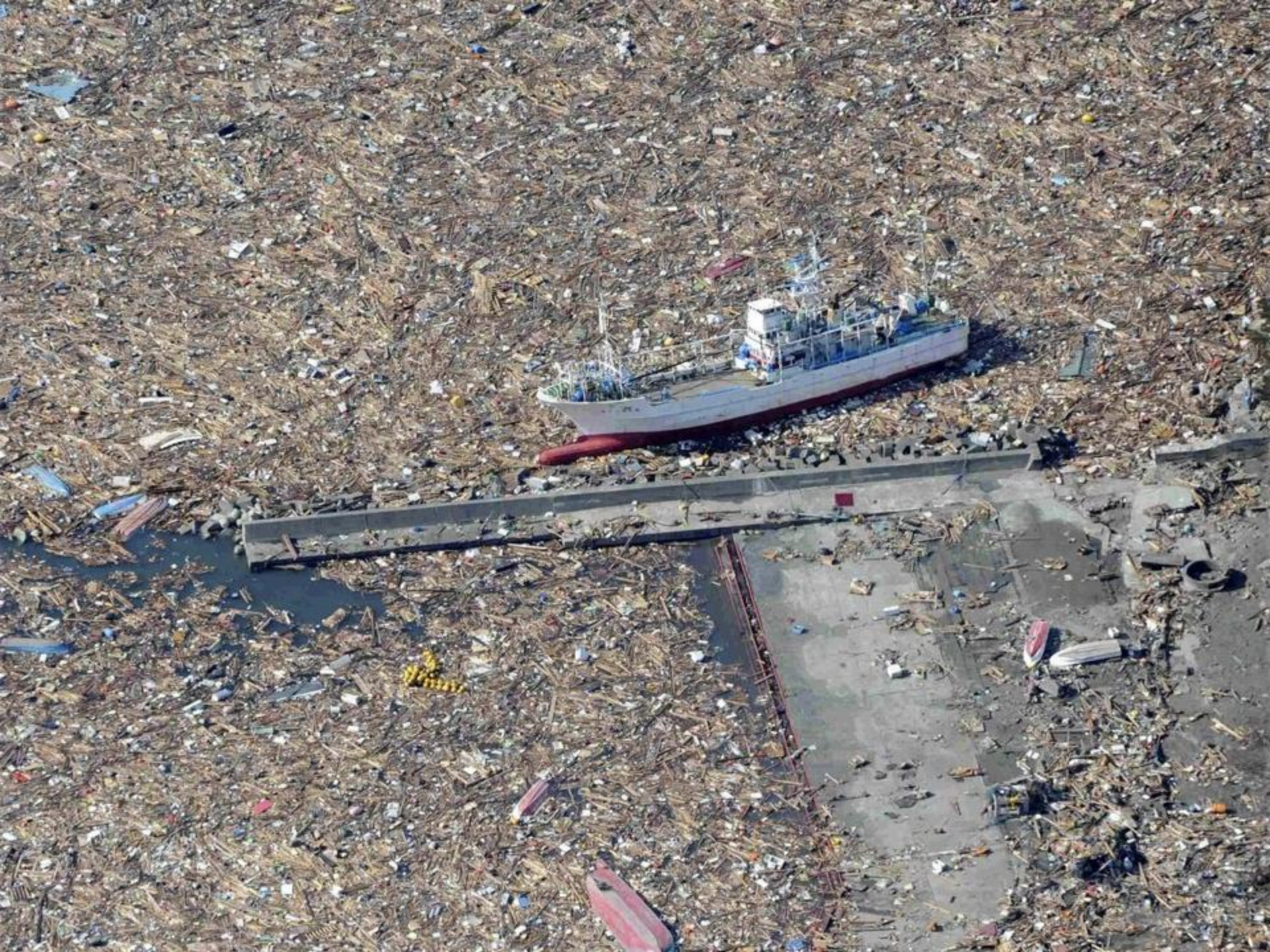


































save water











